



Pre-registration Training Programme

Pre-registration training with Buttercups is so much more than study days. Our unique 'Blended Learning' programme supports trainees from before they begin the pre-reg year until the day they qualify.

2019/20



www.buttercups.co.uk

Welcome

It's been an exciting year of 'firsts' at Buttercups Training. In July we welcomed our very own pre-registration trainee Jeananne Mulligan, who graduated from the University of Manchester and who has been undertaking a joint placement with us and a local community pharmacy. Chloe Atkinson from our Cardiff programme became the 2018 Pre-registration Trainee of the Year at a prestigious event to mark the 30th anniversary of Buttercups Training in October, and in February we



launched our Pharmacy Student Vacation Programme to help pharmacy students gain valuable experience in community pharmacy.

Nothing stands still for very long and pre-registration is no exception, so once again we have updated and developed our pre-registration programme to meet the demands of our trainees and tutors.

This year we are launching **PRESTO** (Pre-Reg Exam Support Tool Online), a new live resource which helps trainees work methodically through the GPhC registration assessment framework. Trainees can feel overwhelmed when preparing for the exam so we are developing PRESTO to bring together the elements of the registration assessment framework in a logical, user-friendly format.

Pre-registration is a demanding year when trainees have to manage working full-time, perhaps for the first time in their life, with ongoing study. We take the training and support of

our trainees very seriously and hope to be able to support you through the challenges of the coming year.

Paul



Paul Johnson MRPharmS
Head of Professional Development

Paul has worked in several areas of the profession including, community pharmacy and general practice, with roles including PCT Prescribing Advisor and Pharmacy Superintendent. Paul has been a media spokesperson for the Royal Pharmaceutical Society and as Head of Professional Development, he oversees the development and delivery of the pre-registration programme. Paul is also a trustee for the charity Pharmacist Support.

Key Features

Buttercups pioneering blended learning approach to pre-registration training has continued to grow and develop to meet the needs of our trainees and tutors. Our package is the most comprehensive ever ensuring that trainees are fully supported from before their pre-reg year begins until the day they qualify.

- 7 face-to-face study days
- Full Mock Examination and Review mapped to the 2020 GPhC registration assessment framework
- First Aid Training and Certification
- b-Hive course website provided for each programme
- Comprehensive online training courses
- Interactive virtual classroom tutorials
- A dedicated Buttercups pharmacist course tutor for every programme
- Live online tracking for tutors
- An e-Portfolio for collating records of evidence
- PRESTO! Buttercups live online exam support tool – new for 2019/20!



Chloe Atkinson (right) being presented with her award by Nanette Kerr FRPharmS.

Pre-registration Pharmacist of the Year 2018

I was thrilled to be nominated for the Buttercups Pre-reg of the year award, let alone win. The pre-reg year is tough, fitting studying around working full-time in the pharmacy, but hugely rewarding. Buttercups offers a great programme which not only prepares you for the exam but ultimately to make the transition from pre-reg to pharmacist. Throughout the year, you are continually supported, with study days, webinars and assessments.

I cannot praise the tutors highly enough; my tutor Lena was brilliant and was always on hand if I needed support or advice. I highly recommend this programme.

Chloe Atkinson



Blended Learning

What is 'Blended Learning'?

Since its launch, our pre-registration blended learning programme has proven to be the essential structure required for trainees to progress successfully from student to registered pharmacist. Our training has three broad categories: study days, virtual classrooms, and e-learning.

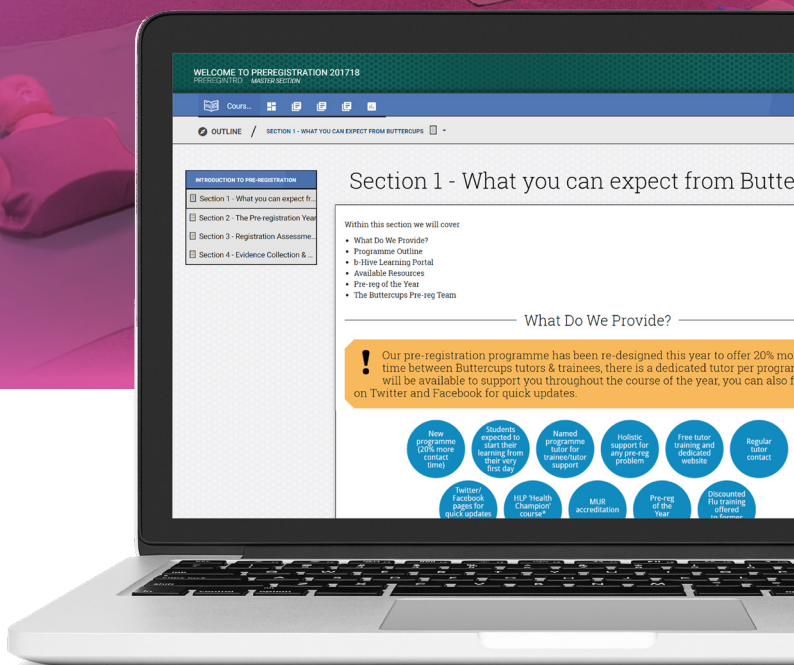
Study Days

Study days run regularly from the start of the pre-reg year and help trainees get to grips with what the GPhC require of them. Study days help trainees to acquire essential knowledge in responding to symptoms, calculations and key clinical areas, all underpinned with a sound understanding of law and ethics. Our methods include interactive workshops, peer learning, case study review and learning through clinical simulation. Our study days cover:

- Minor Ailments and Responding to Symptoms workshops
- Pharmacy Law and Ethics
- Communication Skills and Patient Counselling
- High Risk Medicines workshop
- Medicines Optimisation (practical skills for MUR and NMS)
- Safeguarding & Clinical Governance
- Skin and Wound Care
- Pharmacy Management
- First Aid Training
- Mock Registration Assessment and Review
- Revision Webinars and Planning

Virtual Classrooms

Virtual classroom tutorials enable your trainee's Buttercups tutor to assess their progress between study days. We offer teaching webinars on pharmacy 'essentials' such as pharmacy funding, clinical webinars with exam-style questions to test trainee understanding in real time, and weekly revision webinars in the run up to the exam, developed on topics most requested by our trainees.



e-learning

Our e-learning training programmes are available for trainees to engage with throughout the year, at their own pace. This includes the following:

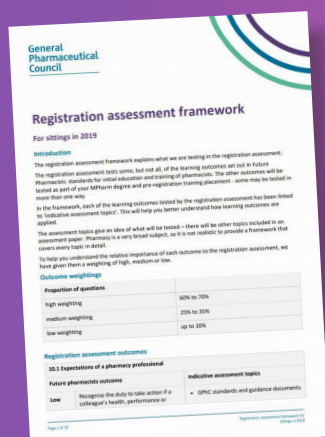
- Medicines Counter Assistant (MCA) course
- RSPH Level 2 Understanding Health Improvement (Health Champion) course
- BNF/BNFC clinical workbooks for every chapter
- BNF/BNFC exam-style questions for every chapter
- Law and Ethics
- POM to P medicines
- Exam-style calculations papers
- Essential Reference Texts
- Drug Tariff
- Responsible Pharmacist workbook
- Women's and Child Health Workbook



Buttercups tutor Ellie Talbot conducting a webinar in our virtual classroom.

2019/20 programme

Month	Study Days	Webinars Tutorials
1		Introduction to Pre-registration
2	Study Day 1	Calculations Introductory Paper
3	Study Day 2	Calculations 1
4	Study Day 3	Pharmacy Funding Webinar Calculations 2
5		Calculations 3
6	Study Day 4	Clinical Case Studies 1 and 2
7	Study Day 5	Clinical Case Studies 3 and 4 Calculations 4
8		Clinical Case Studies 5 and 6
9	Study Day 6: Mock Exam	Clinical Case Studies 7 and 8
10	Study Day 7: Revision Planning	Revision 'Drop in' Webinars
11		Revision 'Drop in' Webinars
12		



Buttercups PRESTO

(Pre-Registration Exam Support Tool Online)

Preparing for what may be the biggest exams of their life is a stressful time for most pre-reg trainees. With so much information available to them it can be difficult to know what is going to be most useful to meet their needs. Our new live online tool breaks down the GPhC registration assessment framework into manageable chunks and links them to the resources that will help them the most.

NEW
FOR
2019/20



Locations

In 2019-20 Buttercups will be providing programmes in the following locations:

Birmingham
Bristol
Leeds
Leicester
Liverpool
London
Manchester
Newcastle
Nottingham



Support

Tutor Support

We realise a successful pre-registration year not only needs great training but also a great tutor. We therefore provide a range of resources and have a dedicated pharmacist available to deal with your enquiries from Monday to Friday, 9.00am to 6.00pm. What's more, as we only use our own dedicated tutors, we get to know your trainees as individuals and are able to provide tailored help and guidance where needed. Our tutor support includes:

- Complimentary training for all new and established tutors, including webinars to coincide with 13, 26 and 39 week trainee assessments
- Tutor website with support documents
- Mid-year trainee reports
- Support for GPhC premises approval
- Recruitment and Visa advice

e-Portfolio and Live Online Tracking

Good organisation and planning are key to the success of the pre-reg year. We want our clients to be well informed about the performance of their pre-registration trainees in order to help keep them on track. We therefore provide two features to help you better support your trainee. Our e-Portfolio can be used to save records of evidence in a format that will allow tutors to assess progress and provide feedback. Additionally our online tracking system gives tutors the opportunity to log in and see how their trainee is doing at any time, day or night.

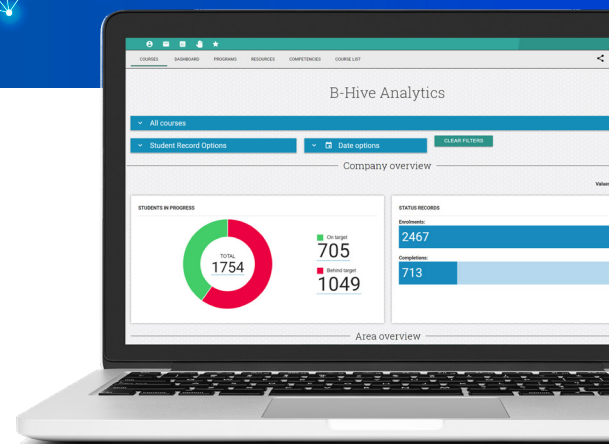
Trainee Support

Pre-registration can be a difficult year and trainee wellbeing is of great importance to us. Our team of Buttercups tutors are ambassadors for the charity Pharmacist Support and are available to offer help and advice about all aspects of pre-reg throughout the year. A member of the pre-registration team is available during the working week, or you can email preregtraining@buttercups.co.uk with enquiries.



Pharmacist Support

working for pharmacists & their families



Our Team



Anita Bedi

Before joining us in 2013 Anita was Lead Pharmacist for an online veterinary retailer. Her broad experience in community pharmacy includes a role as an Anticoagulation Management Pharmacist, but she now specialises in course content and development for Buttercups.



Ellie Talbot

Ellie hails from the North West where after graduation she completed her pre-registration training at the Countess of Chester Hospital. A variety of locum and Pharmacy Manager roles have helped her to appreciate the challenges of pharmacy and pre-registration. Ellie is also our resident calculations guru.



Herpreet Sharma

Herpreet has experience within the community pharmacy sector in both large multiples and independent pharmacies. She worked on a project with Hertfordshire County Council to promote the delivery of equitable health to those with learning disabilities, an initiative which was later rolled out to the whole county.



Jagruti Shukla-Patel

Jagruti's career has been focussed in community pharmacy where roles have ranged from Relief Pharmacist to Store Manager. She has a lot of experience working with pharmacy students and pre-registration trainees, having been a Teacher Practitioner with Hertfordshire University.



Lena Mahboub

Lena is our most recently qualified member of the Professional Development team. She is a practising Community Pharmacist in South Wales where she has been Pharmacy Manager of three different pharmacies within the same company. Lena has had a passion for people development and training throughout her career.



Joanne Higham

Following pre-registration in industry and hospital pharmacy, Joanne took on a variety of hospital roles including specials manufacturing. Moving to community pharmacy she pursued an interest in training, and has been involved in the delivery of vaccination and 'health champion' courses for Buttercups.



Khilna Shah

Khilna undertook a number of community pharmacy positions before becoming Pharmacy Manager for a large multiple. A passion for training led her to becoming the company's Pre-Registration Programme Manager for 10 years, during which time she also developed an optician pre-registration programme.



Suranjit Kamra

Suranjit's background is in community pharmacy where she has undertaken several Pharmacy Manager, and Relief Pharmacist roles. After completing her clinical diploma she worked as a Prescribing Support Advisor for GP surgeries and continues to locum for independent pharmacies.



Charley Clark

Charley is the Lead Co-ordinator for Pre-reg Administration, She graduated from University with a Psychology degree, but moved into education soon afterwards. She also has a background in mental health and social care.

And finally

What others say about Buttercups Pre-reg!



As a Buttercups trainee I felt supported to achieve my potential. It can be daunting when you first start the pre-reg year but I knew that with the Buttercups timetable, I was set for success. A friendly tutor who was a constant at all the study days also helped me feel that I could keep my learning on track. Buttercups is a leading name in pharmacy training and I knew I was in capable hands.

Thorrun Govind, RPS English Pharmacy Board Member and Buttercups Pre-reg 2015-16

Buttercups have quickly established our confidence in a company that truly has expertise in Pre-registration training support. We have no need to look elsewhere.

Barrie Smith, Pre-registration Manager, Paydens Group of Pharmacies



Buttercups provide training which is high quality and professional, but most importantly they make huge efforts to ensure it is practical, engaging and fun –my pre-regs love their Buttercups sessions! They also find the supporting materials very useful and can contact Buttercups whenever they need help or support. Personally, I find Buttercups very accommodating and a pleasure to work with!

Amanda Kemp, Regional Pre-registration Facilitator for East Midlands (Hospital Pharmacy)

Pre-Reg Tailored Learning

At Buttercups we realise every trainee is an individual and that no two people will have exactly the same needs. That's why we created our Pre-Reg Tailored Learning materials which are available to everyone, no matter where their placement is. Whether it's a particular clinical area or more calculations practice, trainees can pick and mix from a range of programmes and get one-to-one support from one of our pharmacist tutors. Our mock exam and review is also a popular choice for pre-reg trainees from all sectors at a choice of venues throughout England and Wales. For more information, check out the Pre-Reg Tailored Learning section at www.buttercupstraining.co.uk



Contact Us

If you're ready to discuss how Buttercups can best meet your training needs, feel free to contact one of our friendly team. Also remember to keep well informed by following us on social media for pre-reg advice, hints, tips and details of vacancies with Buttercups Training.



Buttercups Training Limited
Buttercups House
Castlebridge Office Village
Castle Marina Road
Nottingham
NG7 1TN
0115 9374936

Twitter @ButtercupPrereg
Facebook @ButtercupsPrereg



Buttercups Pharmacy Student Vacation Programme:

A two week structured programme to help pharmacy students gain insight into the world of community pharmacy.

Our aim is to inspire, encourage and support you to go on and make a difference in your career.

Benefits of a Buttercups Summer Placement

- ✓ Experience real life community pharmacy
- ✓ Help inform your pre-registration preferences
- ✓ Make your CV look more impressive
- ✓ Work alongside pharmacists and pharmacy professionals
- ✓ Build on university knowledge and gain new skills
- ✓ Network with other programme trainees on a dedicated Facebook group
- ✓ Two different programmes to choose from

Who can apply?

1st, 2nd and 3rd year MPharm students

Register your
pharmacy
on our
website

www.buttercups.co.uk



2015 - 2020